

NATURAL VENTILATION SYSTEM BY SAVARIA

PROVISIONS BY OTHERS

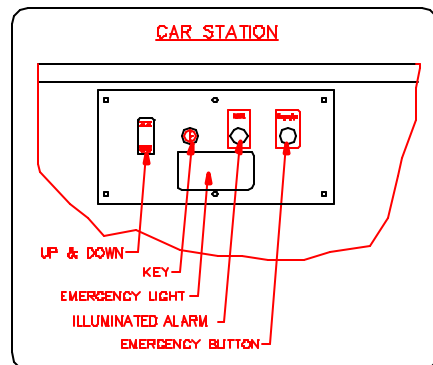
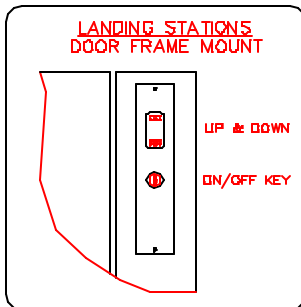
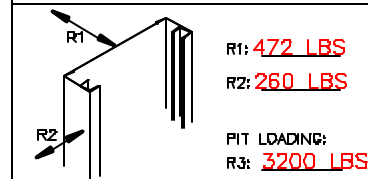
- A - HOISTWAY IN ACCORDANCE WITH ELEVATOR/LIFT SAFETY CODES (U.S. - ASME A17.1 PART XX / CAN - CSA B355-94) AND TO LOCAL CODES AND REGULATIONS. HOISTWAY TO BE FIRE RATED IN ACCORDANCE WITH APPLICABLE BUILDING CODES IF REQUIRED BY SUCH CODES.
  - B - PLUMB HOISTWAY DUE TO CLOSE RUNNING CLEARANCES OWNER/AGENT MUST ASSURE THAT HOISTWAY IS CONSTRUCTED PLUMB ( $\pm 1/8$  IN.) AND SQUARE AND TO SIZE SHOWN.
  - C - PIT WATER PROOFING OR SUMP AS REQUIRED. PIT FLOOR DESIGNED FOR REACTION SHOWN.
  - D - NO CONDUIT, WIRING OR PIPING OTHER THAN THAT PERTAINING TO THE LIFT EQUIP. IS PERMITTED IN THE HOISTWAY
- STRUCTURAL ENGINEER TO ASSURE THAT BUILDING AND SHAFT WILL SUPPORT ALL LOADS IMPOSED BY THE LIFT EQUIPMENT.
- F - ELECTRICAL EQUIPMENT AND WIRING TO COMPLY WITH SECTION 38 OF CSA C22.1. ARTICLE 820 OF NATIONAL ELECTRIC CODE ANSI/NFPA 70
    - 1) FUSED DISCONNECT WITH AUXILIARY CONTACT ON MAIN POWER SUPPLY. PROVIDE TWO 18 AWG CONDUCTORS BETWEEN CONTACT AND CONTROLLER.
    - 3) LIGHTING WITH SWITCH AND ELECTRICAL GFCI OUTLET IN HOISTWAY PIT.
    - 4) BRANCH CIRCUIT WITH DISCONNECT FOR DOOR OPERATORS (IF EQUIPPED).
    - 5) BRANCH CIRCUIT WITH DISCONNECT FOR VENTILATION SYSTEM (IF EQUIPPED).

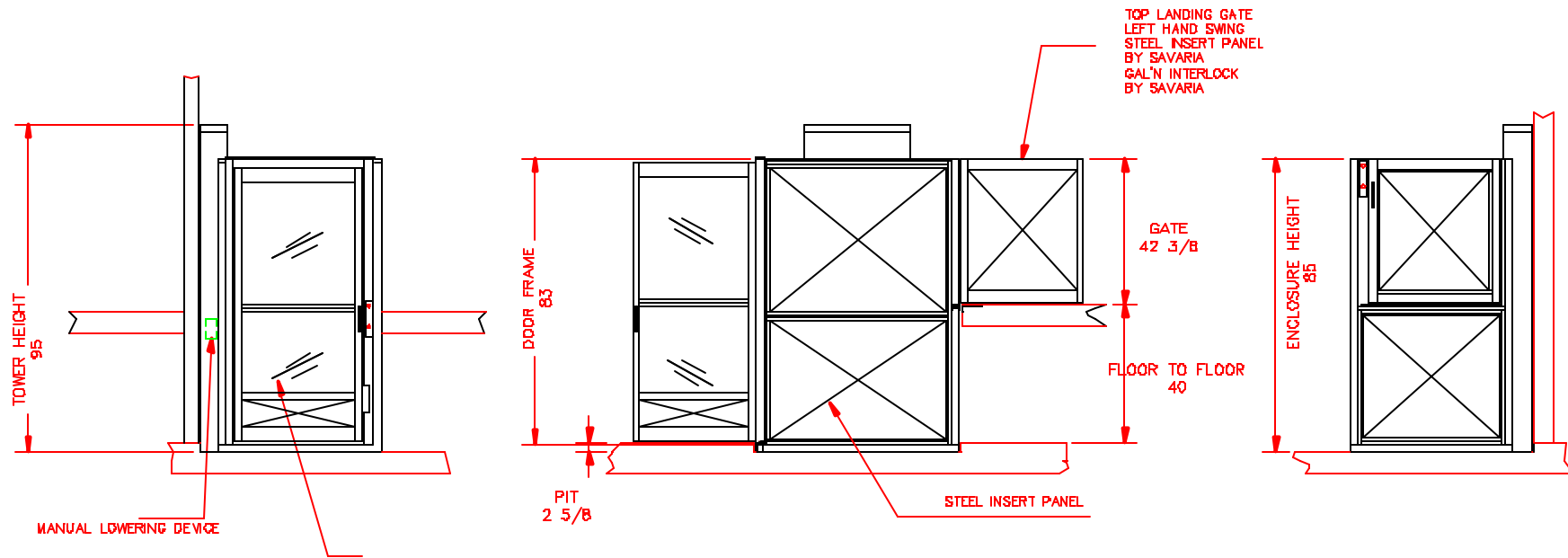
ELECTRICAL DATA				
	AMPERAGE	VOLTAGE	PHASE	REQUIRED
POWER SUPPLY	20	120	1	1
HYDRAULIC DATA				
MOTOR: 1.5 Hp	PLUNGER - $\#1 \frac{1}{2}$ " THK: FULL			
SYSTEM MAX. PRES.: 2000 PSI	CYLINDER	$\#$ 2"	THK	0.125"
FLOW: 1.15 GPM	CHAIN	$\#$ 50	QTY	2
OIL CAP.: 1.25 GAL	PULLEYS:	TEE	P.D.	
WEIGHT/PLUNGER: 2125 LBS				
GENERAL DATA				
CAPACITY: 750 LB	SPEED: UP: 25 ft/m DOWN: 25 ft/m			
LANDING: 2	OPENINGS: LEFT			
TRAVEL: 102"	PIT DEPTH: 2-5/8" RAMP			
PROJECT: XXXXX				
MODEL: V1504-TL QTY.:1				
TOLERANCES IF NOT SPECIFIED				
DEC: ---	ANG: ---	0	FOR APPROVAL	09/11/00
SCALE: NTS	DRAWN BY: A.BOUCHARD	NO.	REVISIONS	
MATERIAL: ---	DATE: OCT 21 2002	SERVICES INDUSTRIELS SAVARIA INC.		
DRAWING # XXXX-1	REV# 1	PAGE: 1/2	TITLE: LIFT FOR HANDICAPPED	

- PIT SWITCH REQUIRED
- GENERAL SPECIFICATIONS:
- 1) COLOR BEIGE STANDARD FOR INDOOR APPLICATION
  - 2) HYDRAULIC PUMP 110 VAC OPERATION (110 VAC UP/12 VDC DOWN)

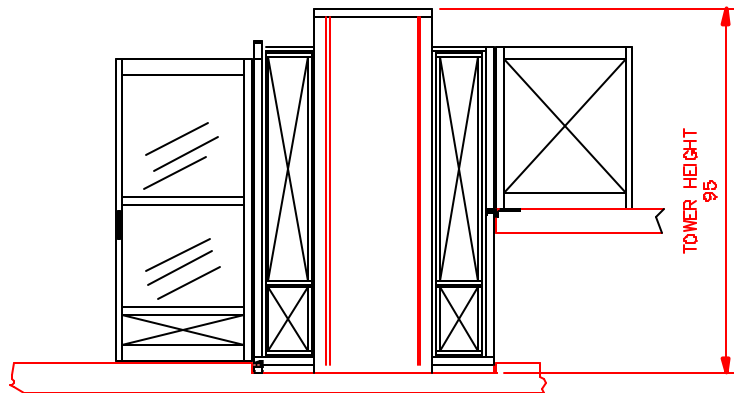
INSTALLER: XXXXXXXX

RAIL FORCES GENERATED BY PLATFORM LOADS ONLY





BOTTOM LANDING DOOR  
RIGHT HAND SWING  
1/4 CLEAR PLEXIGLASS  
BY SAVARIA  
GAL'N INTERLOCK  
BY SAVARIA



PIT SWITCH REQUIRED  
GENERAL SPECIFICATIONS:  
1) COLOR BEIGE STANDARD FOR INDOOR APPLICATION  
2) HYDRAULIC PUMP 110 VAC OPERATION (110 VAC UP/12 VDC DOWN)

PROVISIONS BY OTHERS

A - HOISTWAY IN ACCORDANCE WITH ELEVATOR/LIFT SAFETY CODES (U.S.-ASME A17.1 PART XX / CAN.-CSA B365-94) AND TO LOCAL CODES AND REGULATIONS. HOISTWAY TO BE FIRE RATED IN ACCORDANCE WITH APPLICABLE BUILDING CODES IF REQUIRED BY SUCH CODES.

B - PLUMB HOISTWAY DUE TO CLOSE RUNNING CLEARANCES OWNER/AGENT MUST ASSURE THAT HOISTWAY IS CONSTRUCTED PLUMB ( $\pm 1/8$  IN.) AND SQUARE AND TO SIZE SHOWN.

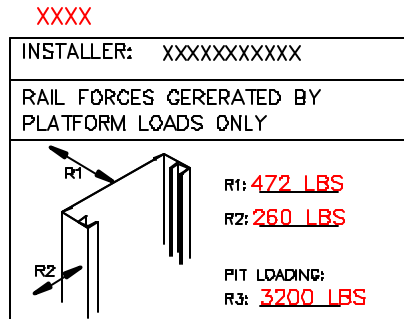
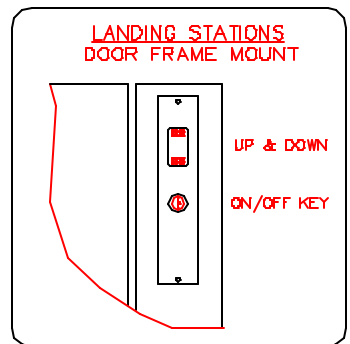
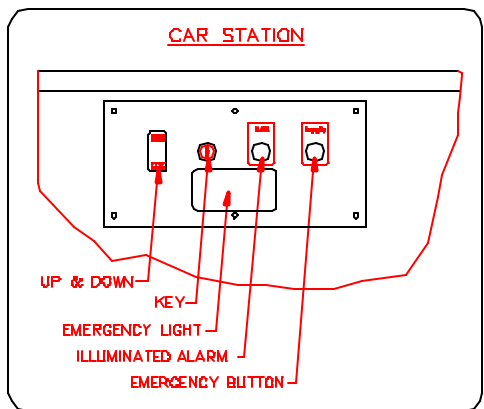
C - FIT WATER PROOFING OR SUMP AS REQUIRED. FIT FLOOR DESIGNED FOR REACTION SHOWN.

D - NO CONDUIT, WIRING OR PIPING OTHER THAN THAT PERTAINING TO THE LIFT EQUIP. IS PERMITTED IN THE HOISTWAY

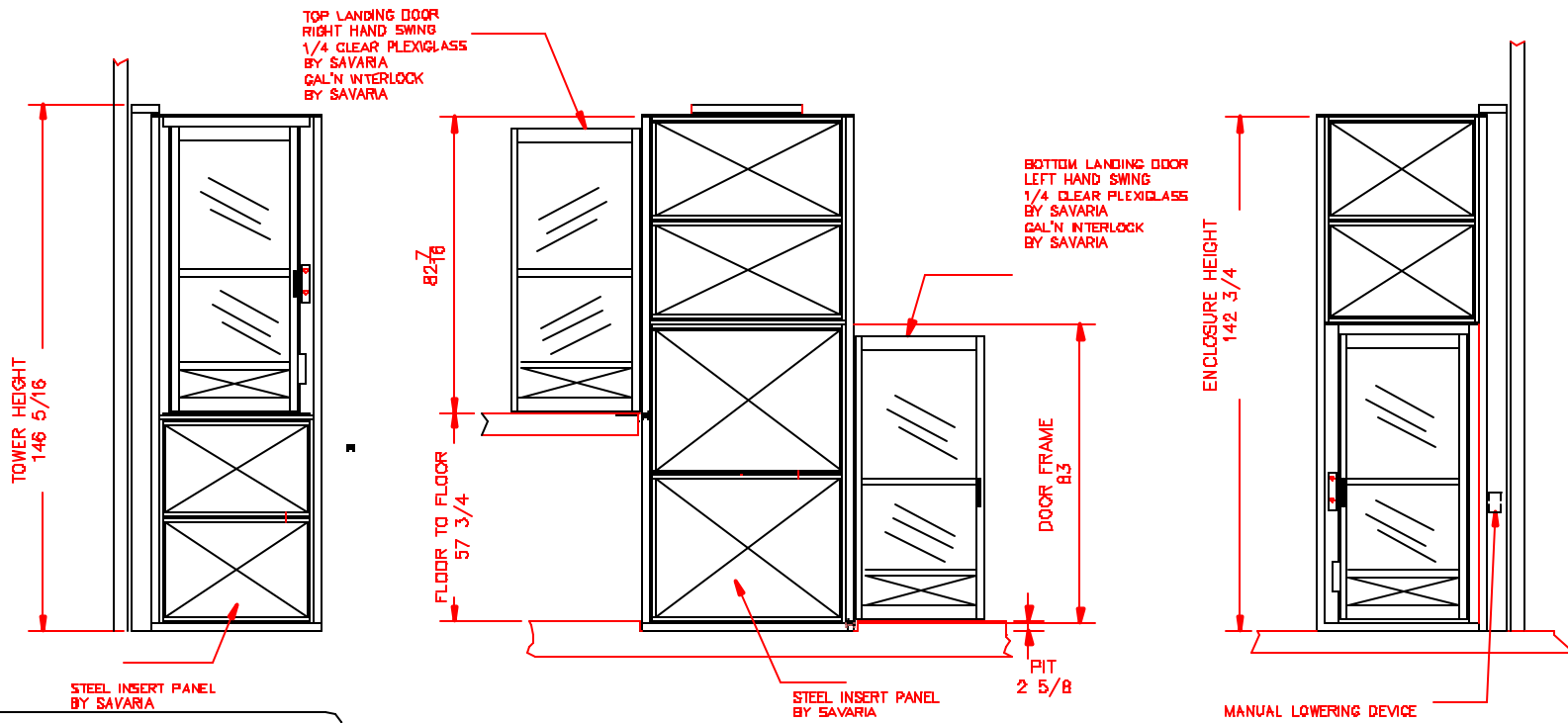
STRUCTURAL ENGINEER TO ASSURE THAT BUILDING AND SHAFT WILL SUPPORT ALL LOADS IMPOSED BY THE LIFT EQUIPMENT.

F - ELECTRICAL EQUIPMENT AND WIRING TO COMPLY WITH SECTION 38 OF CSA C22.1, ARTICLE B2D OF NATIONAL ELECTRIC CODE ANSI/NFPA 70

- 1) FUSED DISCONNECT WITH AUXILIARY CONTACT ON MAIN POWER SUPPLY. PROVIDE TWO 18 AWG CONDUCTORS BETWEEN CONTACT AND CONTROLLER.
- 3) LIGHTING WITH SWITCH AND ELECTRICAL GFCI OUTLET IN HOISTWAY PIT.
- 4) BRANCH CIRCUIT WITH DISCONNECT FOR DOOR OPERATORS (IF EQUIPPED).
- 5) BRANCH CIRCUIT WITH DISCONNECT FOR VENTILATION SYSTEM (IF EQUIPPED).

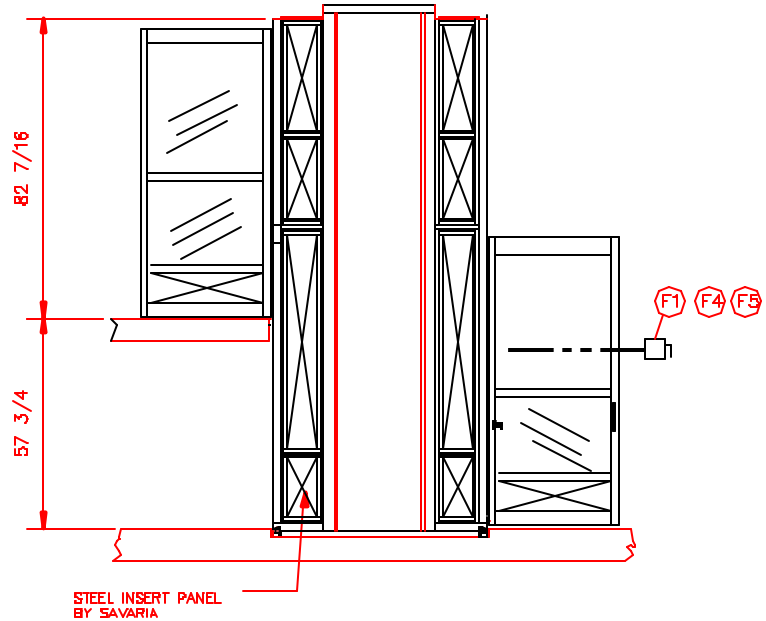
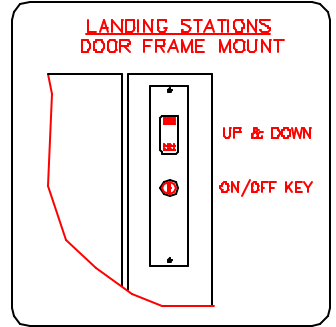
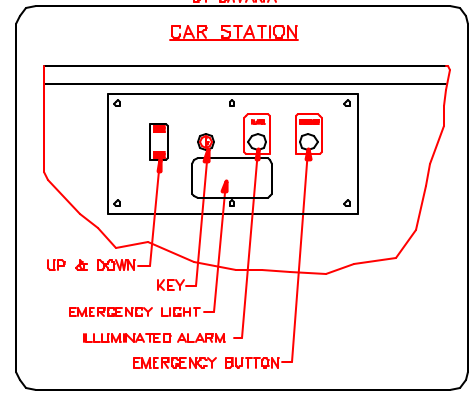


ELECTRICAL DATA				
	AMPERAGE	VOLTAGE	PHASE	REQUIRED
POWER SUPPLY	20	120	1	1
HYDRAULIC DATA				
MOTOR: 1.5 Hp	PLUNGER - $\#1 \frac{1}{2}$ THK: FULL			
SYSTEM MAX. PRES.: 2000 PSI	CYLINDER	$\# 2"$	THK	0.125"
FLOW: 1.15 GPM	CHAIN	$\# 50$	QTY	2
OIL CAP.: 1.25 GAL	PULLEYS:	TEE	P.D.	
WEIGHT/PLUNGER: 2125 LBS				
GENERAL DATA				
CAPACITY: 750 LB	SPEED: UP: 25 ft/m DOWN: 25 ft/m			
LANDING: 2	OPENINGS: FRONT/BACK			
TRAVEL: 40"	PIT DEPTH: 2-5/8"			
PROJECT: XXXXXXXXXXXX				
MODEL: V1504-TL QTY.:1				
TOLERANCES IF NOT SPECIFIED				
DEC: ---	ANG: ---	0	FOR REFERENCE	09/11/00
SCALE:	DRAWN BY:	NO.	REVISIONS	DATE
NTS	A.BOUCHARD			
MATERIAL:	DATE:	SERVICES INDUSTRIELS SAVARIA INC.		
---	DEC 14 2001			
DRAWING #	REV#	PAGE:	TITLE:	
XXXX-1	1	1/2	LIFT FOR HANDICAPPED	



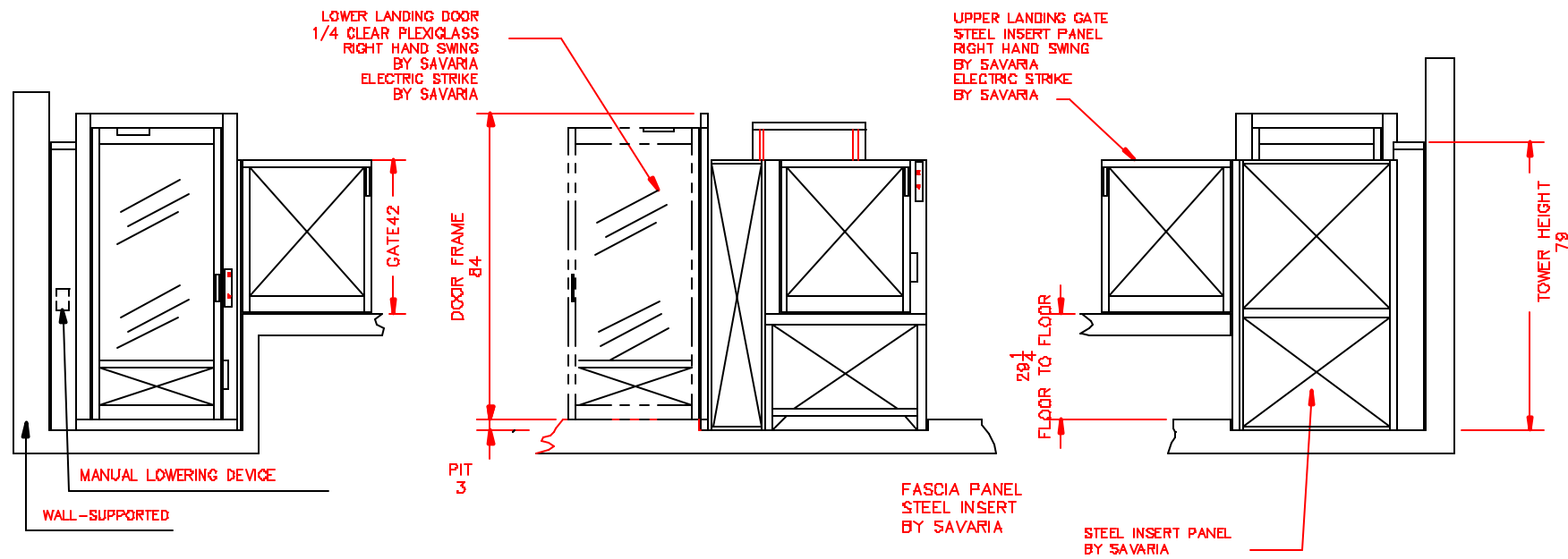
PROVISIONS BY OTHERS

- A - HOISTWAY IN ACCORDANCE WITH ELEVATOR/LIFT SAFETY CODES (U.S.-ASME A17.1 PART XX / CAN.-CSA B355-04) AND TO LOCAL CODES AND REGULATIONS. HOISTWAY TO BE FIRE RATED IN ACCORDANCE WITH APPLICABLE BUILDING CODES IF REQUIRED BY SUCH CODES.
- B - PLUMB HOISTWAY DUE TO CLOSE RUNNING CLEARANCES OWNER/AGENT MUST ASSURE THAT HOISTWAY IS CONSTRUCTED PLUMB ( $\pm 1/8$  IN.) AND SQUARE AND TO SIZE SHOWN.
- C - PIT WATER PROOFING OR SUMP AS REQUIRED. PIT FLOOR DESIGNED FOR REACTION SHOWN.
- D - NO CONDUIT, WIRING OR PIPING OTHER THAN THAT PERTAINING TO THE LIFT EQUIP. IS PERMITTED IN THE HOISTWAY
- E - STRUCTURAL ENGINEER TO ASSURE THAT BUILDING AND SHAFT WILL SUPPORT ALL LOADS IMPOSED BY THE LIFT EQUIPMENT.
- F - ELECTRICAL EQUIPMENT AND WIRING TO COMPLY WITH SECTION 38 OF CSA C22.1, ARTICLE 620 OF NATIONAL ELECTRIC CODE ANSI/NFPA 70
  - 1) FUSED DISCONNECT WITH AUXILIARY CONTACT ON MAIN POWER SUPPLY. PROVIDE TWO 18 AWG CONDUCTORS BETWEEN CONTACT AND CONTROLLER.
  - 2) LIGHTING WITH SWITCH AND ELECTRICAL GFCI OUTLET IN HOISTWAY PIT.
  - 3) BRANCH CIRCUIT WITH DISCONNECT FOR DOOR OPERATORS (IF EQUIPPED).
  - 4) BRANCH CIRCUIT WITH DISCONNECT FOR VENTILATION SYSTEM (IF EQUIPPED).



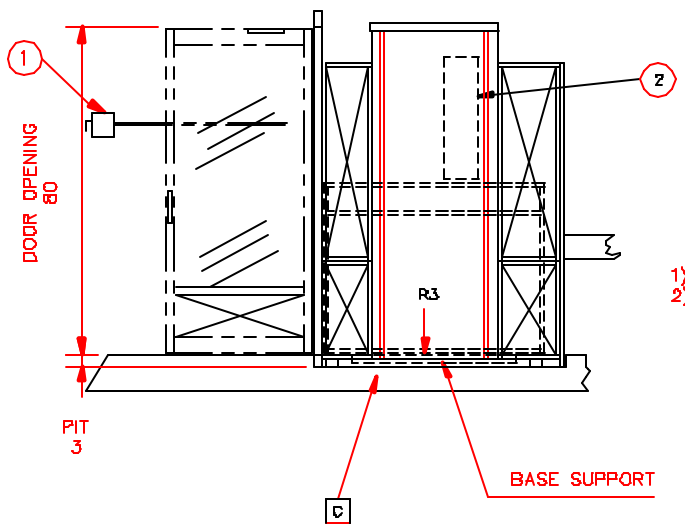
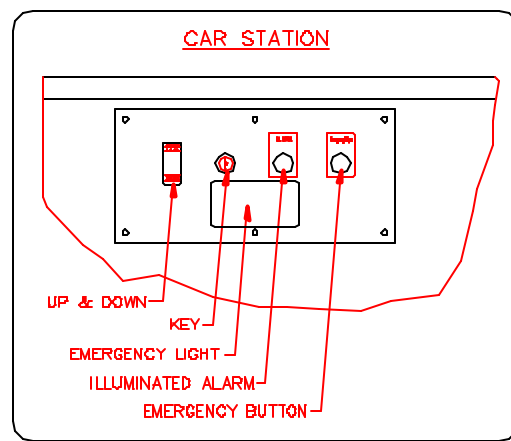
ELECTRICAL DATA				
	AMPERAGE	VOLTAGE	PHASE	REQUIRED
POWER SUPPLY	20	120	1	1
HYDRAULIC DATA				
MOTOR: 1.5 Hp	PLUNGER - #1 1/2 THK: FULL			
SYSTEM MAX. PRES.: 2000 PSI	CYLINDER	B	2"	THK 0.125"
FLOW: 1.15 GPM	CHAIN	# 50	QTY 2	
OIL CAP.: 1.25 GAL	FULLEYS:	TEE	P.D.	
WEIGHT/PLUNGER: 2125 LBS				
GENERAL DATA				
CAPACITY: 750 LB	SPEED: UP: 25 ft/m DOWN: 25 ft/m			
LANDING: 2	OPENINGS: FRONT/BACK			
TRAVEL: 57-3/4"	PIT DEPTH: 2-5/8"			
PROJECT: XXXXXX		XXXXX		
MODEL: V1504-PE		QTY: 1		
TOLERANCES IF NOT SPECIFIED:				
DEC: ---	ANG: ---	0	FOR APPROVAL	09/11/00
SCALE:	DRAWN BY:	NO.	REVISIONS	DATE
NTS	ABOUCHARD			
MATERIAL:	DATE:	SERVICES INDUSTRIELS SAVARIA INC.		
---	JULY 08 2002			
DRAWING #	REV#	PAGE:	TITLE:	
XXXX-1	1	1/2	LIFT FOR HANDICAPPED	

V-1504 TL - LEFT LOWER ENTRY - 90° UPPER EXIT

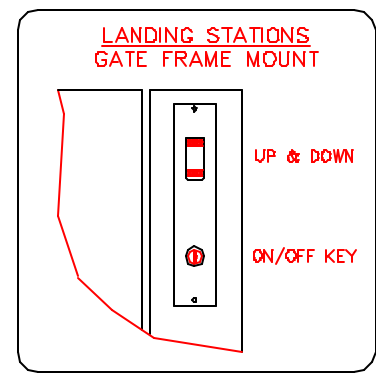


PROVISIONS BY OTHERS

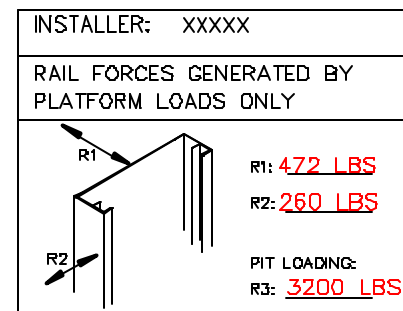
- A - HOISTWAY IN ACCORDANCE WITH ELEVATOR/LIFT SAFETY CODES (U.S.-ASME A17.1 PART XX / CAN.-CSA B365-94) AND TO LOCAL CODES AND REGULATIONS. HOISTWAY TO BE FIRE RATED IN ACCORDANCE WITH APPLICABLE BUILDING CODES IF REQUIRED BY SUCH CODES.
  - B - PLUMB HOISTWAY DUE TO CLOSE RUNNING CLEARANCES OWNER/AGENT MUST ASSURE THAT HOISTWAY IS CONSTRUCTED PLUMB ( $\pm 1/8$  IN.) AND SQUARE AND TO SIZE SHOWN.
  - C - PIT WATER PROOFING OR SUMP AS REQUIRED. PIT FLOOR DESIGNED FOR REACTION SHOWN.
  - D - NO CONDUIT, WIRING OR PIPING OTHER THAN THAT PERTAINING TO THE LIFT EQUIP. IS PERMITTED IN THE HOISTWAY.
- STRUCTURAL ENGINEER TO ASSURE THAT BUILDING AND SHAFT WILL SUPPORT ALL LOADS IMPOSED BY THE LIFT EQUIPMENT.
- F - ELECTRICAL EQUIPMENT AND WIRING TO COMPLY WITH SECTION 38 OF CSA C22.1, ARTICLE 620 OF NATIONAL ELECTRIC CODE ANSI/NFPA 70
    - 1) FUSED DISCONNECT WITH AUXILIARY CONTACT ON MAIN POWER SUPPLY. PROVIDE TWO 18 AWG CONDUCTORS BETWEEN CONTACT AND CONTROLLER.
    - 2) LIGHTING WITH SWITCH AND ELECTRICAL GFCI OUTLET IN HOISTWAY PIT.
    - 3) BRANCH CIRCUIT WITH DISCONNECT FOR DOOR OPERATORS (IF EQUIPPED).
    - 4) BRANCH CIRCUIT WITH DISCONNECT FOR VENTILATION SYSTEM (IF EQUIPPED).



- PIT SWITCH REQUIRED
- GENERAL SPECIFICATIONS:
- 1) COLOR BEIGE STANDARD FOR INDOOR APPLICATION
  - 2) HYDRAULIC PUMP 110 VAC OPERATION (110 VAC UP/12 VDC DOWN)



a	b
48"	103"
60"	115"
72"	127"
96"	151"
108"	163"
120"	175"
144"	199"
168"	223"



ELECTRICAL DATA				
	AMPERAGE	VOLTAGE	PHASE	REQUIRED
POWER SUPPLY	20	120	1	1
HYDRAULIC DATA				
MOTOR:	1.5 Hp	PLUNGER - $\phi$ :	1 1/2"	THK: FULL
SYSTEM MAX. PRES.:	2000 PSI	CYLINDER $\phi$ :	2"	THK 0.125"
FLOW:	1.15 GPM	CHAIN $\phi$ :	50	QTY 2
OIL CAP.:	1.25 GAL	PULLEYS:	TEE	P.D.
WEIGHT/PLUNGER:	2125 LBS			
GENERAL DATA				
CAPACITY:	750 LB	SPEED UP:	25 ft/m	DOWN: 25 ft/m
LANDING:	2	OPENINGS:	L90	
TRAVEL:	29-1/4"	PIT DEPTH:	3"	
PROJECT:	XXXXXX			
MODEL:	V1504-TL	QTY.:	1	
TOLERANCES IF NOT SPECIFIED				
DEC:----	ANG:----	0	FOR APPROVAL	
SCALE:	DRAWN BY:	NO.	REVISIONS	DATE
NTS	A. BOUGHARD			
MATERIAL:	DATE:	SERVICES INDUSTRIELS SAVARIA INC.		
---	OCT 03 2002			
DRAWING #	REV#	PAGE:	TITLE:	
XXXX-1	0	1/2	LIFT FOR HANDICAPPED	